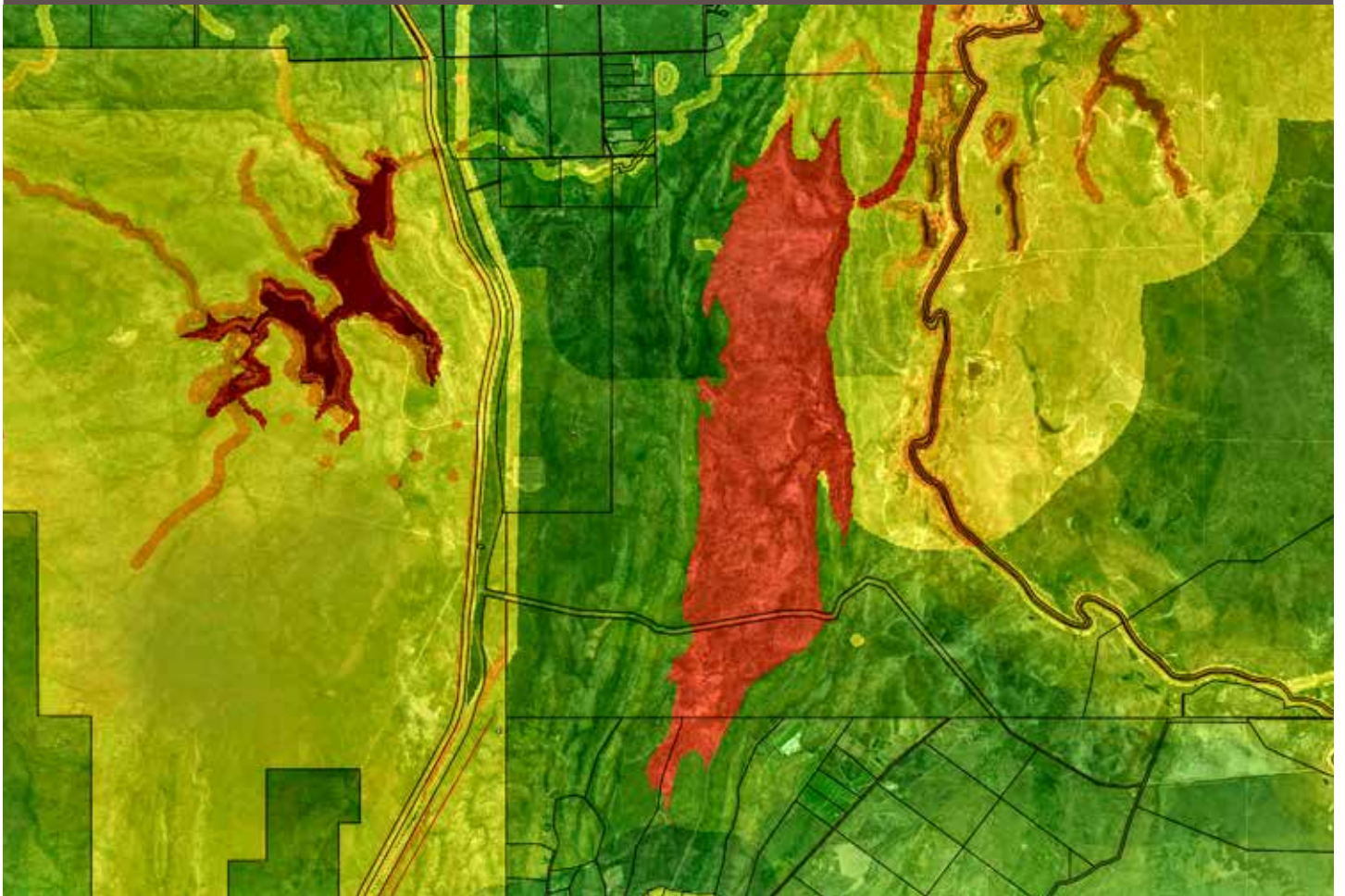


# Spatial, Data and Digital



# Using spatial data to make informed project decisions and showcase them to the community.

CNC Project Management's Spatial, Data and Digital team is comprised of highly experienced individuals with significant experience in spatial data management, spatial analysis and modelling and mapping.

Our team provides technical and discipline-specific information to enable our clients to easily manage their project as well as identify issues and constraints in their projects.

As part of our planning and feasibility assessments, our team will take your vision for a project and find the optimal site or alignment. Our team has access to key information about potential project areas from established mapping databases that they use to appropriately advise your project's needs.

We also use GIS applications for field data collection activities, recording and storing data in a range of spatial formats, and balancing constraints and opportunities to inform project decision-making.



## Our expertise

### Project Data Management

We establish spatial database and manage project data from internal, external and field capture to ensure spatial data is accurate and organised. This includes procuring specialised data including imagery and converting data from legacy or hard copy formats.

### Analysis

Our team undertakes various analysis to help inform project decisions including constraints analysis and multiple criteria analysis.

### Mapping

Our team creates maps for a variety of purposes, from regulatory submissions, alignment and site mapping, mapping for landholders and stakeholder engagement, construction line lists and easement plans. This includes creation of web mapping, online dashboards and viewers that are accessible to project teams.

### 3D mapping and analysis

We provide 3D depictions of landforms and infrastructure. This can be used for analysis of items such as shadows, levels, distance, visual obstructions, sensitive receptor assessments.

### For further information

[cncprojects.com.au](http://cncprojects.com.au)  
[info@cncprojects.com.au](mailto:info@cncprojects.com.au)  
1300 123 262  
Melbourne | Brisbane | Sydney  
Darwin | Sunshine Coast