

# CNC Project Management



# About CNC

Our teams see the big picture while taking care of the essential detail.

Servicing



Energy



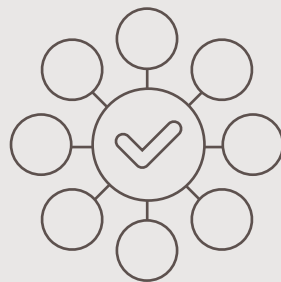
Infrastructure



Resources



70 expert staff  
nation-wide



7 unique service areas



450+ projects

Values

Excellence

Passion

Integrity

Teamwork

# Our Services



Project Planning and Management



Environmental Management and Compliance



Permitting and Approvals



Spatial, Digital and Data Services



Stakeholder Engagement and Communications



Land Access and Property Services



Agreement and Payment Management

## About Us

CNC Project Management is an advisory company serving the infrastructure, energy and resource sectors.

We deliver excellent results for clients in the renewable energy, electricity transmission, pipeline, natural gas and hydrogen, road, rail, minerals and water sectors.

CNC Project Management was established by Dave Maloney in 2006 and our experienced team of specialists have been helping clients deliver projects for over 18 years.

We pride ourselves on our relationships – with our people, our clients and the communities in which we work.

We have offices throughout Australia, with many of our team located in rural and regional locations.

Our approach is based on our values of teamwork, excellence, passion and integrity.

CNC Project Management contributes to many industries as members of the Clean Energy Council (CEC), Australian Pipelines and Gas Association (APGA), International Association of Public Participation (IAP2), Certified Environmental Practitioner Scheme (CEnvP) and Queensland Petroleum Exploration Association (QUPEX). These connections allow us to share ideas and stay up-to-date with industry trends and best practice.

## Why CNC?

CNC Project Management helps great companies build amazing projects. We approach every project as if it was our own.

Our unique range of services allow our clients to take advantage of our combined expertise.

We have the best people who deliver the right expertise and who share your vision and passion for making projects a success.

We keep projects moving to achieve the big picture objectives while being meticulous with the essential detail that is critical to successful project delivery.

Our experience working with companies of all sizes, from long-established multi-nationals to start-ups, ensures we know how to tailor our support to fit client needs.

This approach has led to long-standing client relationships and the industry awards we have received for our work.

## What we do

We work across all stages of the project lifecycle, from project inception and planning, through design and approvals, to construction and into operation.

We work as part of our clients' teams to deeply understand their project.

Taking the time to understand a project's vision, we map out the issues and use our skills and experience to make the project a success.

This approach allows us to:

- plan for achieving project milestones and anticipate challenges, and provide our clients the necessary support
- navigate complex environments with ease while enhancing our clients' reputation with stakeholders, regulators and the community
- guard against delays and unexpected events, saving your project money and protecting your reputation.



CNC Project Management offers a full range of advisory services including:

**Project Planning and Management**

We can assist with project management, project conceptualisation, undertaking options analysis and constraints studies, and quality assurance.

**Permitting and Approvals**

We can help your project secure primary and secondary approvals, including developing permitting strategies and confirming approvals pathways and timeframes.

**Environmental Management**

We provide environmental planning and management services. This includes environmental risk assessment and environmental auditing. Our environmental services also include support during construction such as implementation of environmental approvals conditions, erosion and sediment control management, cultural heritage management and fauna handling. We are also able to undertake IS (infrastructure sustainability) audits and ratings.

**Land Access and Property Services**

We engage with landholders to secure access and tenure for projects, including liaising with landholders during construction activities. We can develop land acquisition and compensation strategies and undertake property tenure analysis. We can also secure native title agreements and undertake engagement with Indigenous landholders.

**Stakeholder Engagement and Communications**

We develop strategies and plans for stakeholder engagement and project communications. We then implement those strategies and plans, creating project material and engaging with stakeholders, regulators and the community.

**Spatial, Data & Digital**

We establish spatial (GIS) systems for projects ensuring all spatial data is captured, stored and analysed to help make informed decisions about your project. This includes undertaking constraints analysis, multiple criteria analysis, and providing maps and visualisations for the project team, regulators and community.

**Agreement and Payment Management**

For under-construction and operating infrastructure assets, such as wind farms, we manage and process payments agreed with landholders, near neighbours, the community, and other entities to ensure payments are accurate and paid in a timely manner.





## Contact us

1300 123 262  
info@cncprojects.com.au  
cncprojects.com.au

**Sydney**  
Level 3, 31 Alfred Street  
Sydney NSW 2000

**Melbourne**  
Level 7, 180 Flinders Street  
Melbourne VIC 3000

**Darwin**  
Charles Darwin Centre  
Level 16,  
19 Smith Street Mall  
Darwin NT 0800

**Brisbane**  
Level 6, 200 Adelaide  
Street Brisbane QLD 4000

**Sunshine Coast**  
1/40 Dacmar Road Coolum  
Beach QLD 4573

# Project planning and management



# Bringing projects to life through our range of expertise.

CNC's Project Planning and Management team are experts in helping manage complex energy and infrastructure projects from concept development through to execution.

Our team uses a staged approach, consistently deliver clear objectives, agreed milestones, and approved gateways all while assisting to refine a project's scope.

For long-term projects our team works side-by-side with clients to scope each stage individually, enabling them to assess risks and opportunities as new information arises, and providing clarity and certainty for future stages.

The Project Planning and Management team prides themselves on their subject matter knowledge and their robust tools and techniques that allows them to bring together different teams smoothly to produce cohesive, high-quality results and deliverables.



## Our expertise

### Project Strategy

Our team help clients refine project objectives and scope and develop an execution strategy. This includes options and constraints analysis.

### Project Planning

We help structure and manage a project to ensure the efficient progression and coordination between the range of project disciplines.

### Project Controls

Our team can provide scope, schedule and cost controls for projects at any stage of the project lifecycle.

### For further information

[cncprojects.com.au](http://cncprojects.com.au)  
[info@cncprojects.com.au](mailto:info@cncprojects.com.au)  
1300 123 262  
Melbourne | Brisbane | Sydney  
Darwin | Sunshine Coast

# Stakeholder engagement and communications





# Helping projects develop and maintain a social licence to operate.

CNC Project Management's Stakeholder Engagement and Communications team is comprised of communications, engagement and government relations professionals with deep experience across energy and infrastructure projects across Australia. Many members of our team are IAP2 accredited or undertaking accreditation. We provide advice to clients that ensures an optimum outcome for both their project and communities impacted by a project.

We proactively identify and manage community and stakeholder risks that can threaten a project throughout planning, construction and operations.

Our extensive experience in all Australian jurisdictions and our relationships with government and regulators allows us to deliver an expert, best practice approach in addressing mandatory and best-practice consultation requirements at a local, state and federal level.



## Our expertise

### Strategy and Planning

At the outset of projects, we develop communications and engagement strategies and plans. These plans are best-practice and meet regulatory and industry standards.

### Strategic communications

After we develop the strategy, we prepare messaging and create content across a variety of channels.

We also provide advocacy, government relations, media relations, issues management and pre-contract services.

### Engagement

Our team undertakes stakeholder mapping and analysis before engaging directly with the stakeholders and the community.

### Community Relations

We plan and lead events, focus groups, public presentations, workshops as well as implementing community benefit strategies.

### Compliance

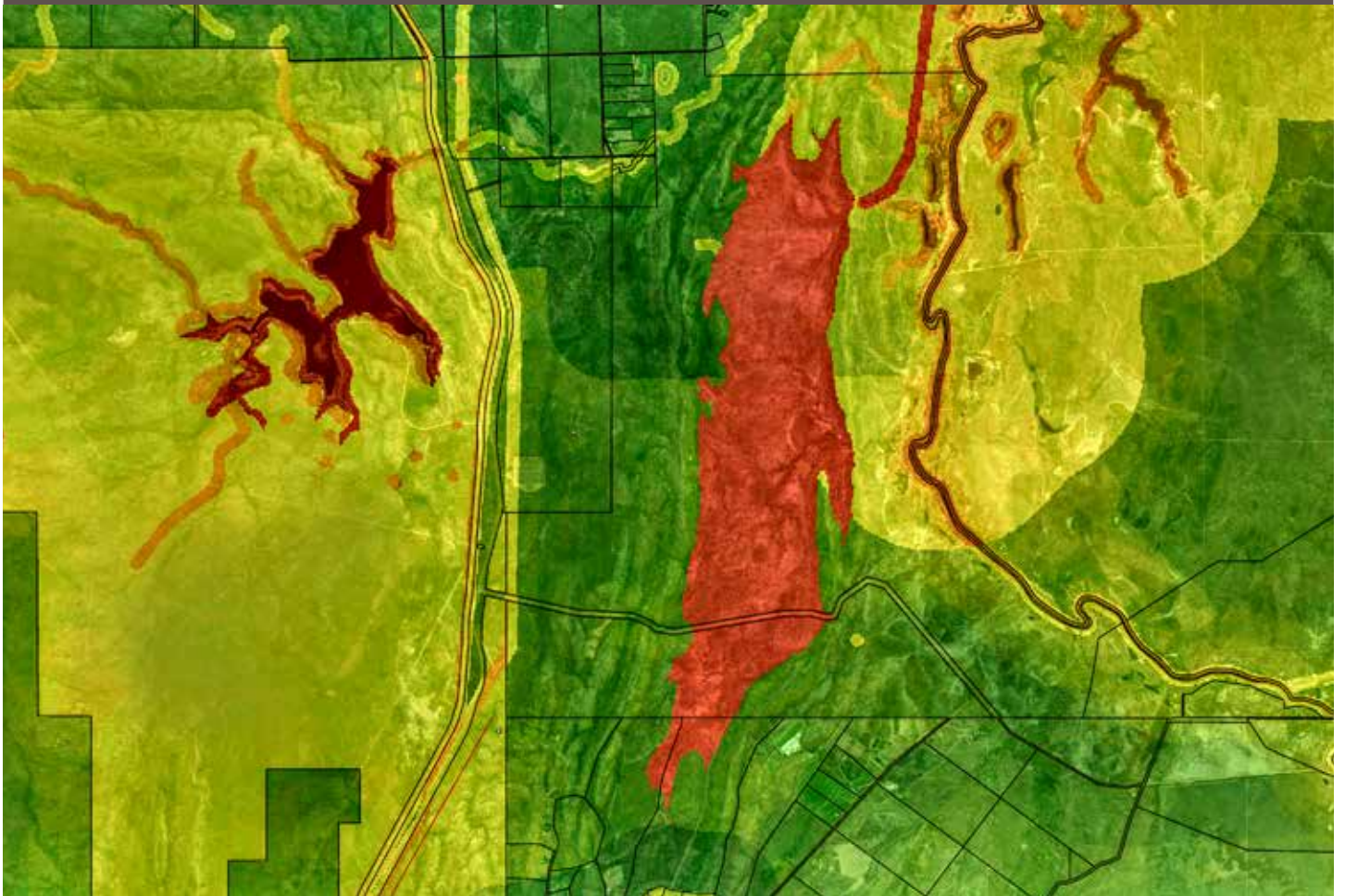
We ensure that activities are compliant and documented to meet legislative and regulator requirements.



### For further information

cncprojects.com.au  
info@cncprojects.com.au  
1300 123 262  
Melbourne | Brisbane | Sydney  
Darwin | Sunshine Coast

# Spatial, Data and Digital



# Using spatial data to make informed project decisions and showcase them to the community.

CNC Project Management's Spatial, Data and Digital team is comprised of highly experienced individuals with significant experience in spatial data management, spatial analysis and modelling and mapping.

Our team provides technical and discipline-specific information to enable our clients to easily manage their project as well as identify issues and constraints in their projects.

As part of our planning and feasibility assessments, our team will take your vision for a project and find the optimal site or alignment. Our team has access to key information about potential project areas from established mapping databases that they use to appropriately advise your project's needs.

We also use GIS applications for field data collection activities, recording and storing data in a range of spatial formats, and balancing constraints and opportunities to inform project decision-making.



## Our expertise

### Project Data Management

We establish spatial database and manage project data from internal, external and field capture to ensure spatial data is accurate and organised. This includes procuring specialised data including imagery and converting data from legacy or hard copy formats.

### Analysis

Our team undertakes various analysis to help inform project decisions including constraints analysis and multiple criteria analysis.

### Mapping

Our team creates maps for a variety of purposes, from regulatory submissions, alignment and site mapping, mapping for landholders and stakeholder engagement, construction line lists and easement plans. This includes creation of web mapping, online dashboards and viewers that are accessible to project teams.

### 3D mapping and analysis

We provide 3D depictions of landforms and infrastructure. This can be used for analysis of items such as shadows, levels, distance, visual obstructions, sensitive receptor assessments.

### For further information

[cncprojects.com.au](http://cncprojects.com.au)  
[info@cncprojects.com.au](mailto:info@cncprojects.com.au)  
1300 123 262  
Melbourne | Brisbane | Sydney  
Darwin | Sunshine Coast

# Agreement and payment management



# Ensuring that reputation and financial risk is avoided by accurate and on-time payments to landholders.

CNC Project Management's Agreement and Payment Management services take the hassle out of making payments to landholders, near neighbours, communities, and other entities by making sure payments are made correctly and on time.

Our expert team ensures the agreed payments are accurate, paid on time, and have stringent quality assurance procedures to ensure payments are processed smoothly.

We have been managing client payments for many years across a range of infrastructure assets and have a highly efficient workflow. Our team make sure that clients never miss a payment date, helping to maintain great stakeholder relationships throughout the life of your project.



## Our expertise

### Establishment

We use our customised system to enter all payment details from existing agreements. This can include title searches, ABN searches and CPI calculations.

### Management of Payments

We forecast future payments to enable budgeting and cash calls. We then ensure payments are correct and on time using a multistage review and authorisation process.

### Quality Assurance

Our quality assurance processes include monitoring of agreement expiry dates and notifying of renewal notice requirements to ensure no errors and security of payments



### For further information

[cncprojects.com.au](http://cncprojects.com.au)  
[info@cncprojects.com.au](mailto:info@cncprojects.com.au)  
1300 123 262  
Melbourne | Brisbane | Sydney  
Darwin | Sunshine Coast

# Permitting and approvals



# Ensuring projects get their approvals on time and on budget.

CNC Project Management's Permitting and Approvals team are experts in planning and leading the regulatory approval process on energy infrastructure projects.

Our extensive knowledge of the statutory approval requirements across Australia and our long-standing relationships with regulators helps us achieve a smooth and predictable approvals process.

Our team can provide effective risk mitigation strategies that consider stakeholder and community feedback during planning and design to prevent negative impacts to a projects budget and schedule.

Our documentation is compliant and practical to implement on-site as to strengthen our clients' ability to maintain compliance, governance and control for the duration of any project.



## Our expertise

### Strategy

We develop permitting strategies and pathways including referrals and assessments, and environmental and social impact assessments.

### Permits

We help secure statutory permits, approvals and licencing across local, state and federal authorities.

### Approvals

We work with clients to secure primary and secondary project approvals for both onshore and offshore projects. Our team has experience in managing Environmental Impact Statements and other major approvals processes



### For further information

[cncprojects.com.au](http://cncprojects.com.au)  
[info@cncprojects.com.au](mailto:info@cncprojects.com.au)  
1300 123 262  
Melbourne | Brisbane | Sydney  
Darwin | Sunshine Coast

# Environmental management and compliance





# Providing outstanding environmental results to projects across Australia.

CNC Project Management's award-winning Environmental Management and Compliance team is comprised of highly experienced professionals with significant experience in across environmental management, auditing and compliance. We also provide in-field environment support during construction and operations.

Our proven management frameworks enable us to implement, manage, measure and report on environmental outcomes in a transparent and accountable manner. We provide technical reports and management plans that are practical, targeted and easy-to-implement in the field.

Our environment professionals are multi-skilled and possess several accreditations. These include staff who possess the Certified Professional in Erosion and Sediment Control (CPESC) accreditation.



## Our expertise

### Environmental Plans

We provide environmental planning and management including development of CEMP, OEMP and on-site implementation of environmental approvals conditions.

### Specialist services

We provide erosion and sediment control plans and can undertake infrastructure sustainability ratings.

### On-site support

During construction and operations activities we can provide environmental management support including fauna handling services.

### Auditing

Our qualified auditors undertake compliance audits and help clients undertake how to manage any areas of improvement.



### For further information

[cncprojects.com.au](http://cncprojects.com.au)  
[info@cncprojects.com.au](mailto:info@cncprojects.com.au)  
1300 123 262  
Melbourne | Brisbane | Sydney  
Darwin | Sunshine Coast

# Land access and property services



# Building trust between landholders and project proponent is at the heart of what we do.

CNC Project Management's Land Access and Property Services team is comprised of highly experienced individuals with significant experience in land access, landholder engagement and negotiation. Our team can provide on-the-ground support for engagement and relationship management after preparing detailed engagement and negotiation strategies.

Our team has experience in pipelines, electricity transmission, water, oil and gas, renewables, road and rail projects. Our Land Access and Property Services personnel are located in metropolitan, regional and rural locations across Australia and can provide flexible options for your project requirements.

The Land Access and Property Services team is supported by CNC's Legal, Payments, Stakeholder Engagement and Communications and Environmental teams who provide a holistic approach to engaging with landholders and meeting their needs throughout the lifetime of a project.



## Our expertise

### Strategy

We develop landholder engagement and access strategies, compensation strategies, negotiation strategies to ensure projects have a clear path to success when engagement commences.

### Landholder Engagement

We build strong, trust-based relationships with a dedicated relationship manager for each landholder. We introduce a project to landholders, secure survey access and then negotiate agreements for tenure for the project.

### Paralegal support

We provide paralegal support including creation of landholder line lists, preparation and delivery of notices and population and finalization of agreements,

### Native Title and Cultural Heritage

We provide native title agreement strategies and negotiations including indigenous engagement. We also provide cultural heritage management.

### For further information

[cncprojects.com.au](http://cncprojects.com.au)  
[info@cncprojects.com.au](mailto:info@cncprojects.com.au)  
1300 123 262  
Melbourne | Brisbane | Sydney  
Darwin | Sunshine Coast